



Technical Service BULLETIN

October 20, 2000

Title:

IMPROVED CRUISE CONTROL SWITCH

Models:

'97 – '00 RAV4

ELECTRICAL
EL012-00

Introduction A change has been made to the Cruise Control Main Switch applicable to 1997 through 2000 model year RAV4 vehicles. A screw has been installed on the back of the switch to increase switch casing durability.

Applicable Vehicles

- 1997 – 2000 model year **RAV4** vehicles.

Production Change Information

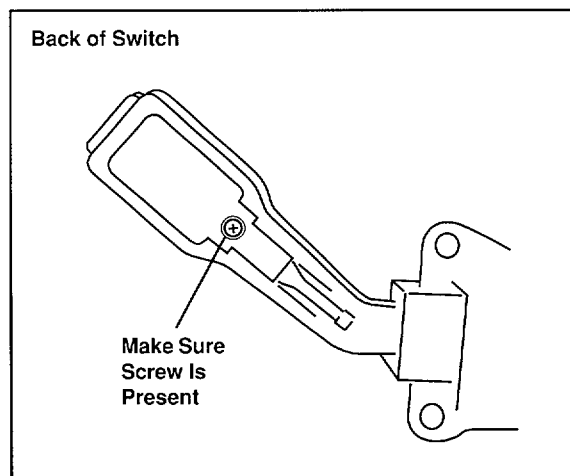
MODEL	STARTING VIN
RAV4 (2WD)	JT3GP10V3Y7065553
RAV4 (4WD)	JT3HP10V1Y7151491

Parts Information

PREVIOUS PART NUMBER	CURRENT PART NUMBER	PART NAME
84630-42010	Same	Main Switch, Cruise Control

Inspection Procedure

When replacing the Cruise Control Main Switch verify that the new part is equipped with a screw on the back of the switch. The screw can be seen from outside the part.



Warranty Information

OP CODE	DESCRIPTION	TIME	OPN	T1	T2
N/A	Not Applicable to Warranty	—	—	—	—



Toyota Supports ASE Certification

Index # 054235

Page 1 of 1